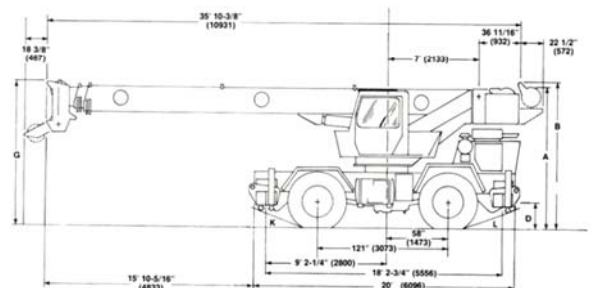
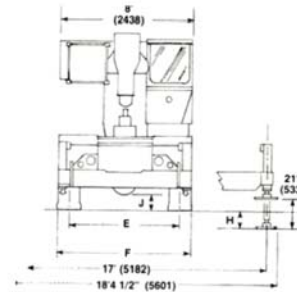


RATED CAPACITIES ON OUTRIGGERS
28 FT. - 70 FT. BOOM
ON OUTRIGGERS - 360°

Radius in Feet	Main Boom Length in Feet							
	28	34	40	46	52	58	64	70
10.0	56,000 (64)	36,000 (69)	36,000 (73)					
12.0	40,000 (59.5)	36,000 (65.5)	36,000 (70)	35,000 (73)				
15.0	31,000 (51.5)	31,000 (59.5)	30,950 (65)	30,300 (69)	29,750 (72)	29,150 (74.5)		
20.0	23,200 (36.5)	23,200 (49)	23,200 (57)	23,200 (62)	23,000 (66)	22,600 (69.5)	22,250 (72)	20,500 (74)
25.0	17,950 (6)	17,950 (36)	17,950 (47.5)	17,950 (54.5)	17,950 (60)	17,950 (64)	17,950 (67)	17,650 (69.5)
30.0		15,350 (15.5)	15,350 (36.5)	15,350 (46.5)	15,350 (53)	15,150 (58)	14,950 (62)	14,750 (65)
35.0			12,850 (20)	12,850 (36.5)	12,850 (45.5)	12,800 (51.5)	12,650 (56.5)	12,500 (60)
40.0				10,750 (23)	10,750 (36.5)	10,750 (45)	10,750 (50.5)	10,750 (55)
45.0					9,020 (25)	9,020 (37)	9,020 (44.5)	9,020 (49.5)
50.0						7,420 (26.5)	7,420 (37)	7,420 (43.5)
55.0							6,170 (3.5)	6,170 (37)
60.0								5,170 (13)
65.0								4,350 (15.5)
Minimum boom angle (deg.) for indicated length (no load)								
0								
Maximum boom length (ft.) at 0 deg. boom angle (no load)								
70								

OPERATING RADIUS FROM AXIS OF ROTATION IN FEET



NOTE: Boom angles are in degrees

A6-829-006839